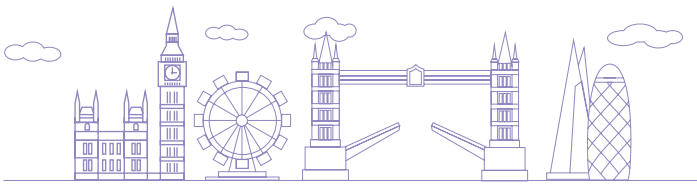


A GUIDE TO
Life in London



ONCAMPUS
LONDON SOUTH BANK



About London

London is home to more international students than any other city in the world. Every year, 90,000 people come from over 200 countries to study and experience the culture, the history and the spirit of one of the world's greatest cities. **In 2022, London was once again ranked as the best city in the world to be a student** (QS Best Student Cities, 2022).

London boasts many beautiful parks where students can spend their lunches, afternoons and weekends. Some of the best views of the city can be seen from the banks of the famous River Thames including the London Eye, Big Ben and St Paul's Cathedral.



Museums & Galleries

London is home to over 200 museums, twice as many as New York. Many are located amongst the squares and gardens of South Kensington, but many are distributed through central London.

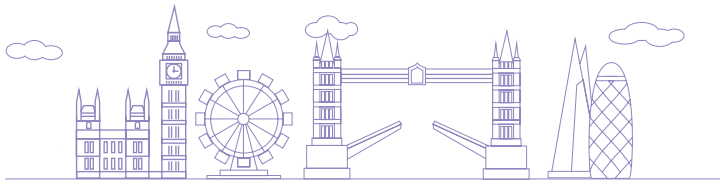
Shopping

From £60,000 jewel-encrusted shoes in Harrods to vintage designer clothes on the Portobello Road market, London is a shopaholic's dream. Oxford Street is the retail centre with the highest concentration of shops in Europe. You'll find every global high-street chain there.



Live music

London is famed for its live music scene, with everyone from up-and-coming unsigned bands to world-famous superstars playing every night of the week all over the city. The O2 Arena near the docklands is London's biggest music venue and has hosted Coldplay, Madonna, Kanye West, Foo Fighters and many many more.



Studying in the South Bank

Just a short bus or tube journey from the very centre of London, LSBU students benefit from being close to city without the high costs. Located in the Borough of Southwark, on the south bank of the River Thames, there is a wealth of museums, galleries, parks, libraries, restaurants, bars and clubs right on the university's doorstep.

South Bank is London's cultural and creative district. Nestled along the river Thames, South Bank is an area of incredible history, architecture, culture, and regeneration. Now it is home to some of the country's top cultural venues, such as The National Theatre, Southbank Centre, London Eye and British Film Institute.

Over

80



restaurants

within the city, including Indian, Thai, Italian and many more....



30



minutes

to Westfield Shopping Centre and the O2 arena by train

Over

70 Nobel Prize

laureates have studied or worked at a London university

125,035

International students

studying in London

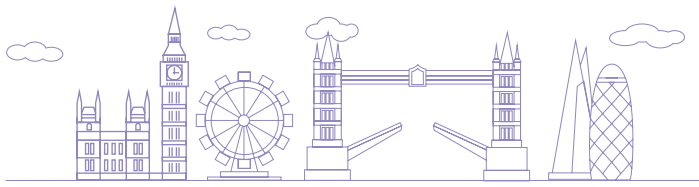


University lectures, faculty visits and experience days will help you get the most out of academic life in London

300



languages spoken in London, more than any other city in the world



More about the South Bank

The South Bank Centre is a vast complex of artistic buildings, situated opposite the Houses of Parliament. Containing three separate arts venues (the Royal Festival Hall, The Queen Elizabeth Hall and the Hayward Gallery) over a 21 acre campus, the South Bank is Europe's largest centre for the arts and holds over 1200 events a year, 300 of which are free of charge.



The Tate Modern is Britain's national museum of international modern art. Each year, more than 5 million visitors visit the vast gallery.

The Royal National Theatre is a controversial building designed by Sir Denys Lasdun containing three large theatres, showing plays and shows all year round.



Take a stroll along the South Bank for a first class view of some of London's major landmarks including the London Eye, Big Ben and the fantastic skyline showing St Paul's Cathedral.

Living Costs London

Living and studying in London gives students the chance to experience the best that the UK has to offer. As the world's best student city there are almost limitless things to do, places to go and areas to explore.

As a large city, students need to use buses and the tube system to move around. This is easy to do and students can get an Oyster card to save money and time. The currency used in the UK is the Great British Pound, GBP - £.

Average price:

Pure Gym Membership



£20 per month

Rent



from **£2,650** per term

Student cinema ticket



£8.20

Travel



£3.00

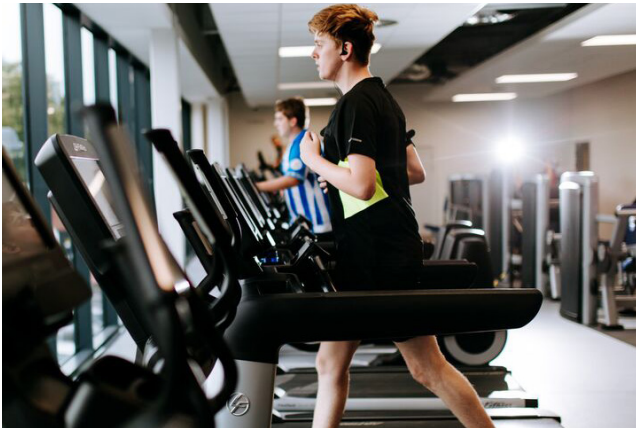
peak trip across zones

Restaurant meal (average)



£20

Sources:
Pure Gym
Numbeo
LondonToolKit
Cineworld



Sports and activities

LSBU Students Union sports and activities include - African and Caribbean Society (A.C.S.), Acting Industry, Atheist Society, Accounting & Finance, Bright Futures LSBU, Christian Union, Chemical Engineering Society, Criminology, Dance, Drama, Film & Photography Society, Green Impact Society, Islamic, Law, LGBT, Music, Nigerian, O.N.E. (Our New Era), Political Science Society, Raise and Give Society (RAG), South Bank Entrepreneurs (S.B.E.) and Young Socialist Society.



Student support

When students enrol on a programme at **ONCAMPUS** London South Bank, they are assigned a Personal Tutor, who is responsible for ensuring they have adequate academic support during your time with us. The Personal Tutor is the first person you should go to if you have a problem: if they can't help you, they will be able to direct you to someone who can.

London South Bank University provides a supportive and empathetic space for students to discuss difficulties and advise on what might help them feel better, working together to create a support plan. All London South Bank students have access to Mental Health & Wellbeing Advisors.

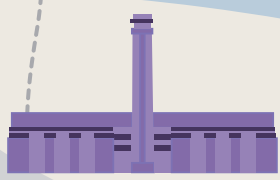
DIGITAL MAP



ONCAMPUS LSBU CITY GUIDE PAGE



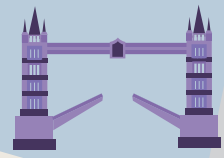
oncampus.global/london-city-guide



Tate Modern



Shakespeare's Globe



Tower Bridge



London Bridge



The Shard



To Brick Lane
2.6 Miles

- ▲ To Tate Modern: 1.4 Miles
- ▲ To St Paul's Cathedral: 2 Miles



Borough

David Bomberg House

Borough Road Building
Faculty Of Arts, Humanities,
Engineering, Science
And The Built Environment

Keyworth Building

Faraday Wing
Faculty Of Business

Perry Library



Newington
Gardens

ONCAMPUS

London South Bank
University Campus

Elephant & Castle



2 Miles



To South Bank
Centre: 1.5 Miles

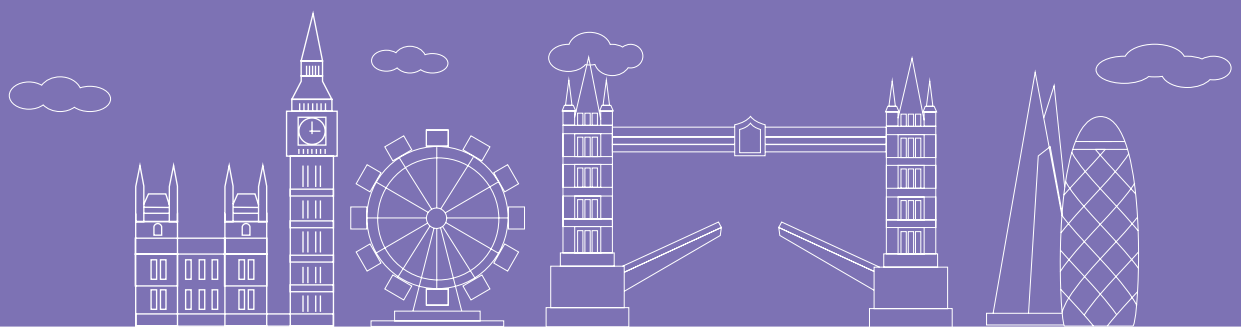
ATION



Southwark North

To Westfield
Shopping Centre: 7.1 Miles

To find out more, visit our website
oncampus.global or get in touch with
your local **ONCAMPUS** representative.



For more information visit:

www.oncampus.global/lbsu