



**ONCAMPUS**  
Achieve more.

A GUIDE TO  
**Life in London**

---

**ONCAMPUS**  
LONDON



# London in numbers



**No. 1**  
 London is officially the best city in the world to be a student  
(QS Student Cities rankings, 2022)



**9.6 million**  
 people live in London, making it the 3rd most populated city in Europe, only second to Moscow and Istanbul



**90,000**  
 international students come and study in London every year



**5 international airports**  
 in the city means exploring Europe and the rest of the world is quick and easy



**Over 70**  
 Nobel Prize laureates have studied or worked at a London university



**300**  
 languages are spoken in London, more than any other city in the world

# City highlights

Every year thousands of people come from all over the world to visit London and experience the culture, the history and the spirit of one of the world's greatest cities.

London boasts many beautiful parks where students can spend their lunches, afternoons and weekends or you can take in some of the best views of the city from the banks of the famous River Thames where you'll see the London Eye, Big Ben and St Paul's Cathedral. Take a look through our City Guide to find out more about this incredible city that you could soon be calling home.



## Museums & Galleries

London is home to over 200 museums, twice as many as New York. Some are located amongst the squares and gardens of South Kensington, but many are distributed through central London.

## Shopping

From £60,000 jewel-encrusted shoes in Harrods to vintage designer clothes on the Portobello Road market, London is a shopaholic's dream. Oxford Street is the retail centre with the highest concentration of shops in Europe. You'll find every global high-street chain there.



## Live music

London is famed for its live music scene, with everyone from up-and-coming unsigned bands to world-famous superstars playing every night of the week all over the city. The O2 Arena near the docklands is London's biggest music venue and has hosted Coldplay, Madonna, Kanye West, Foo Fighters and many, many more.



# The best free things to do

Living in London doesn't have to cost the earth. The city has thousands of free activities and days out to keep you occupied.

## Museums



- British Museum
- Museum of London
- Natural History Museum
- Victoria and Albert Museum
- The Science Museum

## Galleries

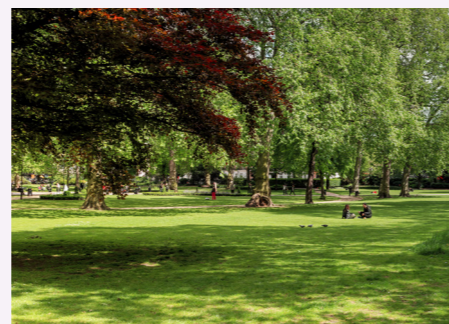


- Tate Modern
- Tate Britain
- The National Gallery
- National Portrait Gallery
- Whitechapel Gallery

## Parks



- Regent's Park
- Hyde Park
- Richmond Park
- Hampstead Heath
- St James's Park



# Travel hacks

London is extremely well-served by all forms of public transport and as a student you are able to get around the city at discounted prices.



## London Underground ('the Tube') and Oyster Cards

London has 11 Tube lines covering the city which make it (usually) the easiest and fastest way of getting around. Every day the Tube handles up to five million passengers and at peak times there are 543 trains travelling around underneath the city.

The Oyster Card is a contactless top-up system which is the cheapest way to travel on the Tube, with single fare prices starting at £2.50 compared to £6.30 when using cash. As an **ONCAMPUS** student you are eligible for a Student Oyster 18+ photocard which enables you to a 30% discount on travel cards and season tickets. Depending on how much you want to explore, travel cards and season tickets may work out cheaper than an Oyster Card.

## Walking and cycling

Not only is cycling cheap and green, it's one of the best ways to experience the city. London is full of cycle lanes and green spaces perfect for cycling. If you don't want to buy a bike then the Santander Cycle hire scheme means you can pick up and jump on bikes anywhere in the city. You can hire a Santander bike for £2 a day which covers you for unlimited 30 minute journeys over a 24 hour period.



# Instagram London



Visit some of the most Instagrammable spots in the city and start sharing your favourite places with #oncampus #london.

Scan the QR codes to walk through these places on Google Street View before you visit them in real life.



**Tower Bridge**  
Nearest tube stop - Tower Hill



**Trafalgar Square**  
Nearest tube stop - Trafalgar Square



**Chinatown**  
Nearest tube stop - Piccadilly Circus



**Notting Hill**  
Nearest tube stop - Notting Hill



**Buckingham Palace and The Mall**  
Nearest tube stop - Goudge Street



**The Shard**  
Nearest tube stop - London Bridge



**Hyde Park**  
Nearest tube stop - Marble Arch



**Covent Garden**  
Nearest tube stop - Covent Garden



**Houses of Parliament**  
Nearest tube stop - Westminster



**Platform 9 3/4**  
Nearest tube stop - Kings Cross



**The South Bank**  
Nearest tube stop - Waterloo



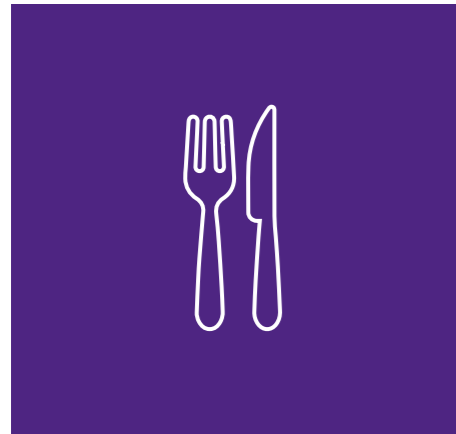
**The London Eye**  
Nearest tube stop - Waterloo



# Places to eat at a great price

London offers plenty to do and see during your time as a student. It also has a fantastic and diverse culinary scene, with a wide variety of places to eat and drink on a student budget and beyond.

Camden in north London is eclectic and quirky much like its selection of restaurants. Shoreditch in the east has a blend of cool trendy haunts and fairly high-end restaurants. Clapham in the south of the city you'll find plenty of European restaurants or Soho in central London, definitely one of the best areas to eat out in London and full of history, nightlife and theatres. Whatever your choice there's an option to suit!



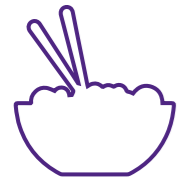
## Nandos

With over 100 restaurants in London, Nandos is the place to go to get the UK's favourite chicken. An average meal with two sides will cost you around £15 and with a Nandos card you can work your way up to a fully free meal!



## Wagamamas

Wagamamas serves Asian food based on Japanese cuisine. In London there are 40 restaurants. An average meal at the chain will cost between £11 - £15.



## ShakeShack

This American fast food restaurant is the ideal place to get a traditional burger for around £10. Try one of their famous frozen custard milkshakes for the full New York experience.



## Tesco and Sainsburys

You'll never be too far away from a branch of one of these supermarkets, two of the biggest in the UK. They are the easiest place to grab a quick meal deal for lunch - £3.50 for a sandwich, a packet of crisps and a drink. They're also the best places to do your weekly shop. You'll be able to buy all the English staples as well as some home comforts.



## Yo Sushi!

Famed for their conveyor belt set-up and serving Japanese street food and sushi, Yo Sushi! is one of the most trendy and popular places to eat out in the UK. It's one of the most affordable places to eat Japanese food on the high street with sushi sets priced at around £11.

# Cool things to do



## London zoo

Opened in 1828, London Zoo houses all of the world's most famous animals - Giraffes, Zebras, Lions and Gorillas. Students can buy a ticket from as little as £23.85 in quieter months, and spend all day at this famous tourist attraction.



## The Science Museum

One of the best free museums in the city, the Science Museum is full of futuristic exhibitions, iconic objects and stories of incredible scientific achievement. Favourite exhibits include Wonderlab, Pattern Pod and Exploring Space.



## Food at Borough Market

Borough Market is historic and the most renowned market in central London. Here you'll find high quality food made through sustainable production. Try food from all over the world made by some of the best chefs in London.



## See the Crown Jewels

The world's most famous collection of gems, jewellery and artefacts are kept under armed guard in The Tower of London. Officially Her Majesty's Royal Palace and Fortress of the Tower of London, this historic castle can be visited for £29.90 and is the only place to see the magnificent selection of 23,578 gemstones.



## Fly above the River Thames

Take to the air over the Thames in London's only cable car and enjoy a truly unique experience. It takes around 15 minutes to travel between Greenwich Peninsula and the Royal Docks and is only £5 for a one way ticket. Enjoy the views!



## Find some great vintage clothes

Whether you fancy a stroll through a trendy area of London, want to grab a bite to eat or are on the hunt for some cool new vintage pieces, Portobello Road is the place to be. This West London area is home to one of the world's largest antique and vintage clothing markets.





ONCAMPUS

ROYAL VETERINARY COLLEGE

The British Library

BIRKBECK

SOAS

The British Museum

LSE THE COURTAULD INSTITUTE OF ART

The National Gallery

The London Eye

Big Ben

QUEEN MARY 4.8 Miles

ROYAL HOLLOWAY 24.5 Miles

GOLDSMITHS 6.8 Miles

London St Pancras

King's Cross St Pancras

London Euston

Euston Square

Russell Square

Bloomsbury Square

Farringdon

Old Street

Barbican

Moorgate

Liverpool Street Station

Holborn

Chancery Lane

St Paul's

St Paul's Cathedral

Mansion House

The Gherkin

Covent Garden

London Blackfriars

Temple

River Thames

Tate Modern

Tower Bridge

Southwark

London Waterloo

Borough

Hyde Park

Green Park

Green Park

St James's Park

Buckingham Palace Gardens

Hyde Park Corner

Knightsbridge

Victoria

Lambeth North

Elephant & Castle

Edgware Road

Baker Street

Regent's Park

Great Portland Street

Mornington Crescent

Marble Arch

Bond Street

Oxford Circus

Oxford Street

Tottenham Court Road

Krishna Consciousness

Leicester Square

Piccadilly Circus

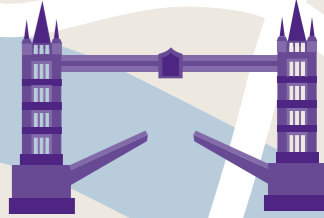
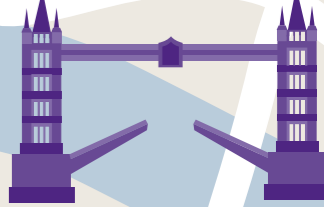
London Charing Cross

Embankment

Westminster

London Waterloo

Borough





For more information visit:

[www.oncampus.global/london](http://www.oncampus.global/london)

