



[www.oncampus.global/sunderland](http://www.oncampus.global/sunderland)

**ONCAMPUS  
SUNDERLAND**

01048



ONCAMPUS Sunderland

2024-25

**2024-25**

**ONCAMPUS  
SUNDERLAND**

ONCAMPUS is proud to work in partnership with the University of Sunderland to offer high-quality university preparation programmes for international students on the University's campus.

The University of Sunderland is an innovative, forward-thinking university with high standards of teaching, research and support, which sits at the heart of one of the UK's most up-and-coming cities. It has strong links with industry and business and works closely with some of the world's leading companies.

The University has invested more than £130 million in its two campuses – the Sir Tom Cowie Campus by the riverside and the City Campus in the city centre – so its students can enjoy first-class facilities and high-quality courses that are perfectly placed to ensure a life-changing student experience.

## Divine, Cameroon

UFP Business progressing to BA Journalism

'I had heard about the fantastic opportunities available at ONCAMPUS Sunderland from a friend, and the foundation programme is really preparing me for my future career. My teachers always give the best advice for us to become the best version of ourselves.'



**1.5 hours**  
to **Edinburgh** by train

**3.5 hours**  
to **London** by train

as well as great train links to other UK cities such as Leeds, Manchester, Birmingham, Leicester and more...



## Contents

<b>+ About University of Sunderland</b>	
University highlights	04
Faculty highlights	06
Progression degrees	
Undergraduate degrees	08
Master's degrees	09
<b>+ About ONCAMPUS</b>	
How <b>ONCAMPUS</b> works	10
Our Programmes:	
Undergraduate Foundation Programme (UFP)	12
International Year One (IY1)	14
Pre-Master's Programme (PMP)	16
<b>+ About Student Life</b>	
Guide to Sunderland	18
<b>+ Accommodation</b>	
Accommodation	22
<b>+ Applying</b>	
Next steps	24



# University Highlights

The University of Sunderland has 20,000 students based on its campuses on the North East coast of the UK, in London and Hong Kong. With a long-established commitment to widening participation and world-leading research, the university has a track record for providing quality student experiences.



## University of the Year for Social Inclusion

The Times and The Sunday Times Good University Guide 2021

State-of-the-art

**£8.5 million**

Sciences Complex allows its students access to outstanding facilities

Sunderland partners with some of the world's largest organisations such as

**Microsoft,  
Yahoo  
Nissan  
Procter & Gamble**

## A UK Top 50 University

Guardian University Guide 2024



**156** nationalities represented in its student population

Population of Sunderland  
**270,000+**

**Over 15** places of worship

Studying in Sunderland offers great value for money.



Tuition fees from:	Accommodation fees from:	Total cost from:
<b>University of Sunderland</b>		<b>£80,020</b>
£ 15,420 x 1 year (ONCAMPUS)	£5,700 x 1 year	(including £1,400 annual international UG discount)
£ 16,000 x 3 years (University)	£4,100 x 3 years	
<b>University in London</b>		<b>£137,130</b>
£ 21,480 x 1 year (ONCAMPUS)	£9,600 x 1 year	(fee based on a similarly ranked university)
£ 26,350 x 3 years (University)	£9,000 x 3 years	

Based on a Business pathway. Accommodation costs for a 40-week study year. Prices correct as of December 2023 and based on September 2024 entry. All prices subject to change.

If you study **International Year One** you could save even more!

# Faculty Highlights

With several subjects continuing to rise through the rankings every year, Sunderland focuses on providing expert teaching and hands-on learning opportunities.

Ranked **5th**



in the UK for **Film Production and Photography**

Guardian University Guide 2024

Ranked **6th**



in the UK for **Pharmacy and Pharmacology**

Guardian University Guide 2024

Ranked **4th**

in the UK for **Media and Film Studies**

Guardian University Guide 2024



CIM|NCTJ|CIPD|IET  
Accredited degree programmes

Ranked **12th**

in the UK for **Tourism, Hospitality and Event Management**

Guardian University Guide 2024

Ranked **6th**



in the UK for **student satisfaction for LLB Law students**

NSS 2021

Ranked **17th**



in the UK for **Sports Science**

Guardian University Guide 2024

Ranked **18th**

in the UK for **Accounting and Finance**

Guardian University Guide 2024

Ranked **4th**



in the UK for **Journalism**

Guardian University Guide 2024

## Health and Life Sciences



**100%**

student satisfaction in **Biomedical Science**

NSS 2021



**100%**

student satisfaction in **Forensic Psychology**

NSS 2021



**Top 30**

in the UK  
for **Health Sciences**

Complete University Guide 2024

## Business, Social Sciences and Humanities



**100%**

student satisfaction in **Business and Finance Management**

NSS 2021



Law students benefit from a mock courtroom to practise their skills



**100%**

student satisfaction in **Fashion Journalism**

NSS 2021

## Engineering and Physical Sciences



**Top 25**

in the UK for **Computer Science and Information Systems**

Guardian University rankings by subject 2024



The David Goldman Informatics Centre is a 'computing cathedral' housing over 200 workstations



Accredited by **IET and BCS**

# Undergraduate degrees you can progress to

with guaranteed progression, subject to achieving the progression criteria, to a University of Sunderland degree.  
Progression to Year 2 of these degrees available through the International Year One programme.

## Business, Economics, Finance and Management pathway

English Required IELTS equivalent: **6.0** - no component lower than 5.5

Pass Mark for progression: **40%** in academic modules

BA (Hons) Accounting and Finance <sup>1</sup> (iCAS option)	BA (Hons) Events Management <sup>1</sup>
BA (Hons) Business and Financial Management (iCAS option)	BSc (Hons) Esports Event Management <sup>1</sup>
BA (Hons) Business and Human Resource Management (iCAS option*)	BSc (Hons) International Tourism and Hospitality Management <sup>1</sup> (iCAS option)
BA (Hons) Business and Management <sup>1</sup> (iCAS option)	BSc (Hons) Tourism and Aviation Management
BA (Hons) Business and Marketing Management (iCAS option)	BSc (Hons) Tourism Management
	LLB (Hons) Law (iCAS option)

## Humanities progression degrees

BA (Hons) Childhood Studies You will need a DBS check and medical to progress onto this degree	BA (Hons) Journalism
BA (Hons) English: Creative and Professional Writing	BA (Hons) Media, Culture and Communication
BA (Hons) Fashion Journalism	BA (Hons) Media Production
BA (Hons) Film and Media	BA (Hons) Social Media Management
BA (Hons) Film Production	BA (Hons) Sports Journalism
	BSc (Hons) Criminology

## Engineering and Physical Sciences pathway

English Required IELTS equivalent: **6.0** - no component lower than 5.5

Pass Mark for progression: **40%** in academic modules

BEng (Hons) Electronic and Electrical Engineering (iCAS option)	BSc (Hons) Computer Science (iCAS option)
BEng (Hons) Engineering Technologies	BSc (Hons) Cybersecurity and Digital Forensics (iCAS option)
BEng (Hons) Mechanical Engineering (iCAS option)	BSc (Hons) Digital and Technology Solutions
	BSc (Hons) Game Development (iCAS option)

Students can also progress from the Business pathway

## Life Sciences pathway

English Required IELTS equivalent: **6.0** with no component lower than 5.5

Pass Mark for progression: **40%** in academic modules

BSc (Hons) Biochemistry (iCAS option)	BSc (Hons) Physiological Sciences
BSc (Hons) Biomedical Science	BSc (Hons) Psychology (iCAS option)
BSc (Hons) Biopharmaceutical Science (iCAS option)	BSc (Hons) Psychology with Counselling (iCAS option)
BSc (Hons) Clinical Psychology (iCAS option)	BSc (Hons) Sports and Exercise Sciences
BSc (Hons) Cosmetic Science (iCAS option)	BSc (Hons) Sports Coaching
BSc (Hons) Forensic Psychology (iCAS option)	MPharm Pharmacy (4-year degree)
BSc (Hons) Medicinal Chemistry (iCAS option)	7.0 IELTS (no component less than 6.5), 65% in all academic modules (Biology, Chemistry and Skills for Science), plus an interview.
BA (Hons) Physical Education and Youth Sport	

# Master's degrees you can progress to

with guaranteed progression, subject to achieving the progression criteria, to a University of Sunderland degree.

English Required IELTS equivalent: **6.0** - no component lower than 5.5

Pass Mark for progression: **40%** in academic modules

Extended Award MA/MSc (please see page 17)	MSc Computing Suitable for students who have not studied computing before
LLM Commercial Law and International Trade*	MSc Cosmetic Science*
LLM Criminal Law and Procedure	MSc Data Science
LLM International Human Rights*	MSc Drug Discovery and Development
LLM Law*	MSc Finance and Management <sup>1</sup>
MA Childhood and Youth Studies*	MSc Human Resource Management
MA Design*	MSc Inequality and Society*
MA Education You will need higher grades or interview for progression	MSc International Business Management
MA English Studies You will need higher grades or interview for progression	MSc Leadership in Criminal Justice and Policing*
MA Journalism / MA Journalism (Sport)*	MSc Pharmaceutical and Biopharmaceutical Formulations*
MA Marketing <sup>1</sup>	MSc Project Management
MA Public Relations*	MSc Psychology (Conversion) Suitable for students who haven't studied Psychology before
MA Radio, Audio and Podcasting*	MSc Public Health
MA Teaching English to Speakers of Other Languages (TESOL) You will need higher grades or interview for progression	MSc Sports and Exercise Sciences
MA Visual Practice*	MSc Tourism and Aviation
MBA (Generic) Master of Business Administration	MSc Tourism and Events
MSc Applied Cybersecurity	MSc Tourism and Hospitality
MSc Applied Data Science*	
MSc Applied Project Management*	

<sup>1</sup> These degrees are also available at the University of Sunderland's London campus.

\*additional progression requirements for these degrees. Please visit [www.oncampus.global](http://www.oncampus.global) for more details.

Please note that not all programmes are available for a January start. Please visit [www.oncampus.global](http://www.oncampus.global) for more details.

# How ONCAMPUS Works

Our programmes at **ONCAMPUS** Sunderland are designed for international students who do not meet the requirements for direct entry to study at the University of Sunderland. You will benefit from the support we offer in preparing you to progress to the University.



## Increase your English language level

- Academic writing skills
- Academic reading skills
- Presentation and discussion skills
- Listening and note taking

## Improve academic grades and study skills

- Additional year of study equivalent to 13 years of UK study for undergraduate degree
- Demonstrate academic level to meet university requirements
- Present higher grades in pathway programme than achieved at high school for undergraduate entry
- Learn the study skills essential for success in UK universities
- Additional research study skills for Master's students

## Expert university progression support

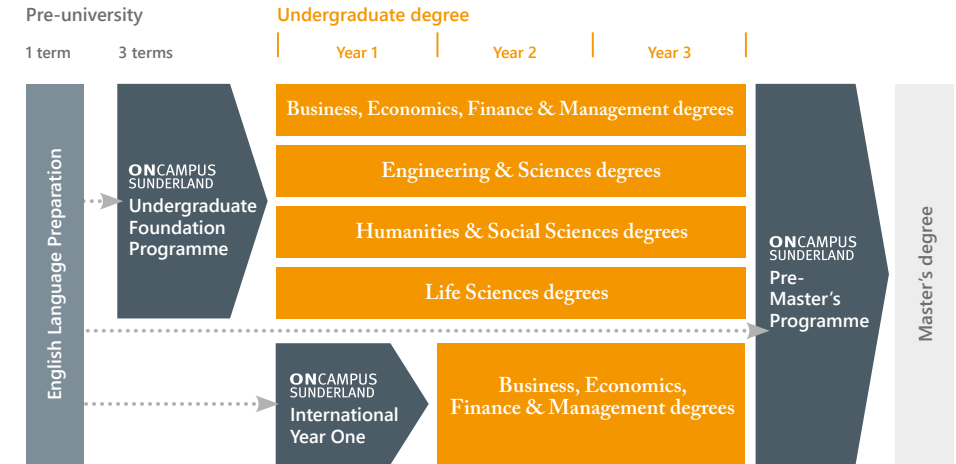
- Expert guidance on which degree to progress to
- One-to-one support sessions
- Faculty visits and meetings

## Progress to university degree

# Your route to a degree at University of Sunderland

**ONCAMPUS** Sunderland offers guaranteed progression\* to a wide range of undergraduate and postgraduate degrees at the University of Sunderland, on successful completion of our Foundation, International Year One or Pre-Master's programmes.

\*subject to meeting the specified criteria.



About ONCAMPUS

## ONCAMPUS gives you...

### Outstanding teaching and support

Through every step of your journey with us, you will be supported by highly qualified teachers and support staff, both inside and outside the classroom.

Your personal tutor will meet with you regularly to ensure that you are on track to pass the programme and progress to your chosen degree.

Your personal tutor is also there to help you with any issues you might have inside or outside the classroom.

### A proven track record of success

**ONCAMPUS** is part of Cambridge Education Group, one of the UK's leading university pathway providers since 1952.

Cambridge Education Group was the first private institution to offer university foundation programmes in the UK in 1985, and successfully prepares thousands of students for the UK's top universities every year.

### Part of the University from day one

The **ONCAMPUS** Sunderland centre is located at the heart of the University, close to all the University's facilities.

You will receive a University student card, and with it you will have access to all the University's facilities, clubs and societies while you study your **ONCAMPUS** programme.

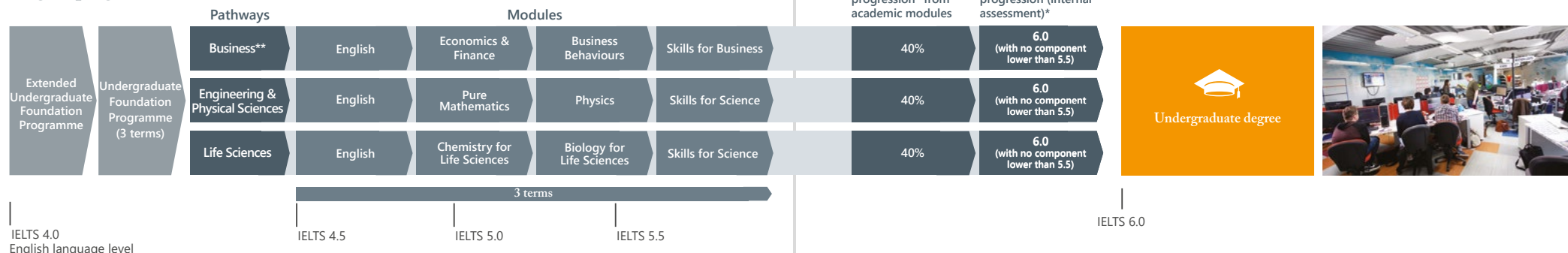
You will meet your course leader at the University before you start your degree, and have the opportunity to try out some of the excellent facilities.



# Undergraduate Foundation Programme (UFP)

This programme gives guaranteed progression\* to Year 1 of a wide range of undergraduate degrees or the International Year One in Business and Management.

## Degree progression route



## Entry criteria

**English level:** **4.5 IELTS** or equivalent, with no single element less than 4.0, for 3-term UFP. The ICAS programme requires 5.5 IELTS or equivalent, with no single element lower than 5.5.

An extended programme is available if you do not have the required English language level.

This programme lasts 4 terms and includes English followed by 3 terms of UFP.

**Academic requirements:** **11-12 years**  
Successful completion of 11-12 years of schooling with good grades. Please visit [www.oncampus.global](http://www.oncampus.global) for academic entry requirements.

**Guideline minimum age:** **17+**  
Must be 18 at the start of degree programme.

For a full list of progression degrees see pages 08-09.

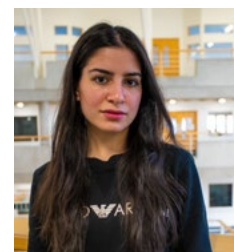
\*subject to meeting the specified entry criteria

\*\* includes progression to Humanities and Social Sciences degrees

Note: Modules are subject to availability and you will be guided onto the best combination of academic modules for your intended degree when you arrive at ONCAMPUS Sunderland. For more information about module content visit our website [www.oncampus.global](http://www.oncampus.global).

Pass mark for guaranteed progression\* from academic modules

English level required (IELTS equivalent) for progression (internal assessment)\*



“ONCAMPUS Sunderland doesn’t make me feel like I’m a foreigner, everyone here is helpful and friendly with me. It’s so easy to make new friends, to study with them and hang out with them. My tutors at ONCAMPUS are so friendly, we do practical work and work in small groups.”

Raghda | Iraqi | Progressed to: MPharm Pharmacy

Dates and fees	Number of terms	Business and Humanities tuition fee	Engineering and Life Sciences tuition fee	Progressing to undergraduate degree starting in
23 September 2024 - 08 June 2025	3	£15,420	£16,470	September 2025
23 September 2024 - 08 August 2025	4	£20,560	£21,610	September 2025
04 November 2024 - 08 August 2025	3.5	£17,990	£19,040	September 2025
06 January 2025 - 08 August 2025	3	£15,420	£16,470	September 2025

All programmes are subject to a £450 registration fee.

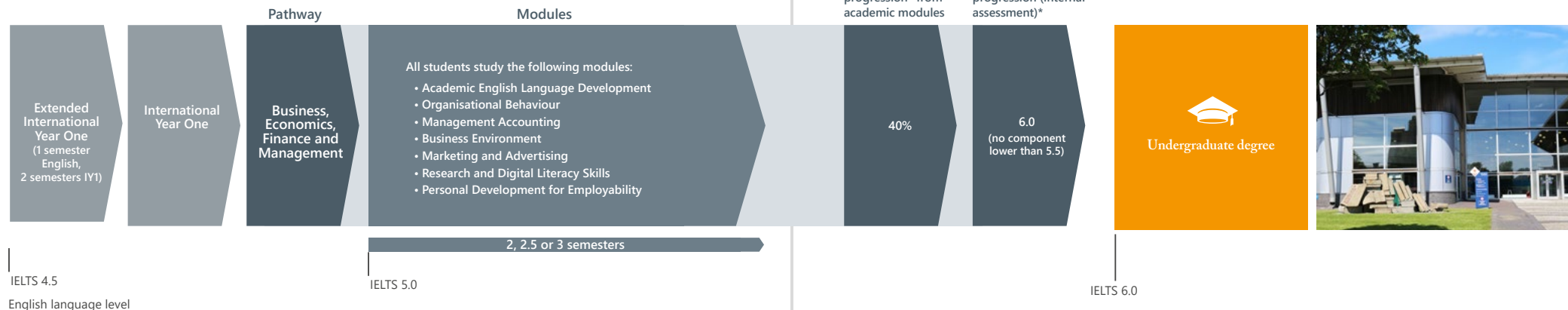
The 3.5 term programme consists of English language during the first 0.5 term although some academic content may be included. For more details please visit [www.oncampus.global/about-us](http://www.oncampus.global/about-us)

25, 20, 15, 10 & 5 week online EAP programmes are available starting from March onwards. Please contact us for further details.

# International Year One (IY1)

This programme offers guaranteed progression\* to Year 2 of selected Business degrees.

## Degree progression route



## Entry criteria

**English level:** **5.0 IELTS** or equivalent for 2 semester IY1. The ICAS programme requires 5.5 IELTS or equivalent, with no single element lower than 5.5.

An extended programme is available if you do not have the required English language level.

This programme lasts 3 semesters and includes English followed by 2 semesters of IY1.

**Academic requirements:** **12 years**

Successful completion of high school with good grades. Please visit [www.oncampus.global](http://www.oncampus.global) for academic entry requirements.

**Guideline minimum age:** **17+**

Must be 18 at the start of degree programme.

For a full list of progression degrees see pages 08–09.  
\*subject to meeting the specified entry criteria.



“The staff, student support team and teachers are helpful with everything. I will be progressing to Mechanical Engineering and I’m so excited to learn more. Sunderland is a great place to be and has lots of international students.”

**Nimra | Pakistani | Progressed to: MEng Mechanical Engineering**

Dates and fees	Number of semesters	Tuition fee	Progressing to undergraduate degree Year 2 starting in
23 September 2024 - 08 June 2025	2	£15,420	September 2025
23 September 2024 - 08 August 2025	3	£20,560	September 2025
04 November 2024 - 08 August 2025	2.5	£17,990	September 2025
13 January 2025 - 08 August 2025	2	£15,420	September 2025

All programmes are subject to a £450 registration fee.

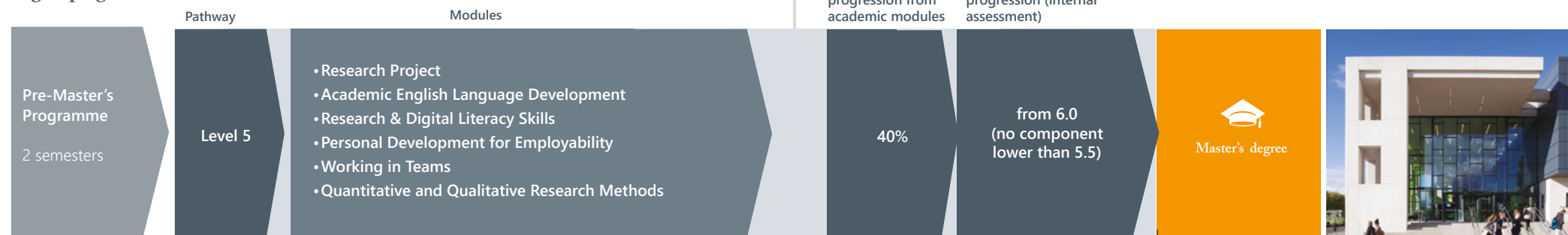
The 2.5 semester programme consists of English language during the first 0.5 semester although some academic content may be included. For more details visit [www.oncampus.global/about-us](http://www.oncampus.global/about-us)  
25, 20, 15, 10 & 5 week online EAP programmes are available starting from March onwards. Please contact us for further details.



# Pre-Master's Programme (PMP)

The Level 5 Pre-Master's Programme provides the opportunity for progression to a wide range of Master's degrees.

## Degree progression route



IELTS from 4.5  
English language level

IELTS 6.0

## Entry criteria

**English level:** From 4.5 IELTS

or equivalent, with no single element less than 4.0 for 2-semester PMP. An extended programme is available if you do not have the required English language level. This programme lasts 3 semesters and includes an English language module (ELPP) followed by 2 semesters of PMP.

**Academic requirements:**

**Degree**  
Successful completion of a Bachelor's degree or equivalent from a recognised university.

**Guideline minimum age:**

21+

For a full list of progression degrees see page 09.

\*subject to meeting the specified entry criteria.

Dates and fees	Number of semesters	Tuition fee	Progressing to Master's degree starting in
23 September 2024 - 09 May 2025	2	£15,420	September 2025
23 September 2024 - 08 August 2025	3	£20,560	September 2025
04 November 2024 - 08 August 2025	2.5	£17,990	September 2025
13 January 2025 - 08 August 2025	2	£15,420	September 2025

All programmes are subject to a £450 registration fee.

The 2.5 semester programme consists of English language during the first 0.5 semester although some academic content may be included. For more details visit [www.uncampus.global/about-us](http://www.uncampus.global/about-us)



## Extended Master's Degree MA/MBA/MSc

All applications should be made directly to The University of Sunderland

Fast-track your career in business, marketing or human resource management with this extended course designed to enable third-class degree holders to pursue a postgraduate qualification. Demonstrate your value to employers and qualify for senior roles with significant responsibility.

The course prepares you for senior roles and will accelerate your progress towards well-paid positions of leadership. On completion of the first term, you can transfer to a range of postgraduate courses, including:

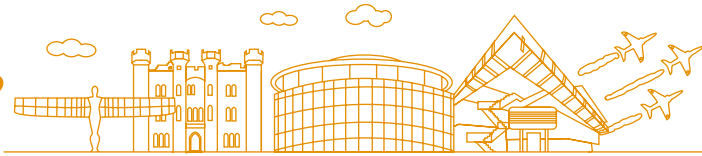
- MA Marketing (15 months)
- MSc Human Resource Management (15 months)
- MSc Finance and Management (15 months)
- MSc Tourism and Events (15 months)
- MSc Tourism and Hospitality (15 months)

In advance of this, you will take the module 'Introduction to Postgraduate Projects, Research Methods and Study Skills', which will give you the skills required to undertake a project relevant to your chosen course.

Course Length	Teaching	International Fee	Intakes*
15 months	Full time	(price on application)	November 2024 April and July 2025

\*Courses and intakes are subject to change and can be removed. An international student discount of £1,000 is available.

# Guide to Sunderland, England



Sunderland offers the perfect combination of city and seaside living and is a friendly, diverse and affordable place to live and study. With miles of beautiful coastline, beautiful parks, an international-class airshow, and the award-winning National Glass Centre, the city has much to showcase.

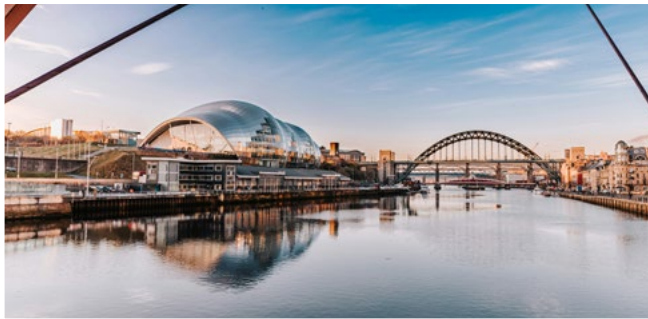


## Enjoy miles of beautiful coastline

at hidden gems such as Seaburn and Roker, offering blue flag beaches, kayaking, canoeing, abseiling and surfing for the adventurous.

## Just over 30 minutes to Newcastle

or the "Toon" as it's locally known. Visit the popular Quayside, marvel at the iconic Angel of the North and embrace the friendly Geordie welcome.



## A variety of popular cultural attractions

such as The National Glass Centre, the International Air Show and Sunderland Museum and Winter Gardens.



## Olympic-sized swimming pool

located within Sunderland's Aquatic Centre

an indoor sports complex also containing a diving pool and a gymnasium. It is the only full Olympic-standard pool in North East England between Glasgow and Leeds.



Over **50** 

restaurants within city centre

including Indian, Thai, Italian and many more...



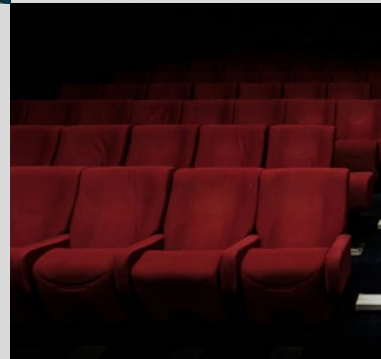
Population of over **270,000+**



**2** 

cinemas within the city centre

plus a full size one on campus



Have fun dry slope skiing, ice skating or wall climbing at the North East premiere ski facility



Under **1** mile to **Stadium of Light**

15 minute walk from the Sir Tom Cowie Campus or a 7 minute cycle to the huge sporting stadium



# DIGITAL MAP



**ONCAMPUS Sunderland**  
CITY GUIDE PAGE



[oncampus.global/sunderland-city-guide](http://oncampus.global/sunderland-city-guide)



▲ To Newcastle, Mosques and Hindu Temple: 15 Miles

M Millfield

M University

The Royalty Theatre

University Of Sunderland City Campus

Sunderland Empire Theatre

The Bridges Shopping Centre

M Sunderland

M Park Lane



The Stadium Of Light

M St Peters

River Wear



Wearmouth Bridge

Stadium Of Light



▲ To Roker Beach  
1 mile from **ONCAMPUS** classrooms

**ONCAMPUS**

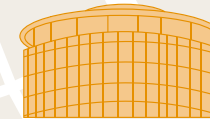


University Of Sunderland Sir Tom Cowie Campus



National Glass Centre

City Library And Arts Centre



Sunderland Museum And Winter Gardens

Church Of Holy Trinity

# Accommodation in Sunderland

ONCAMPUS aims to make sure that finding a place to live while you study with us is quick and easy. It is very important that you have a place to stay when you arrive in the UK, and while you can choose to organise your own accommodation, we strongly recommend that all students book a room through our free service.

We have fantastic residences available for you to book in Sunderland, offering good value for money. The details below indicate the types of facilities available and the price range you can expect from our accommodation options.



7-11 minute  
WALK TO  
ONCAMPUS



Wi-Fi  
Access



Study  
Area



En-Suite  
Bathroom



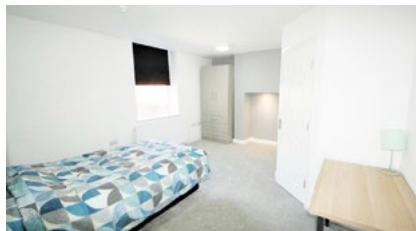
Laundry  
Facilities



Communal  
Lounge

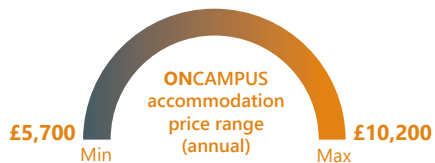


CCTV

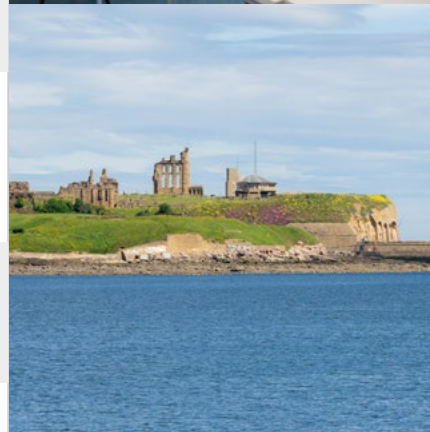


## + Facilities Include:






- Student lounge
- Games room
- Communal study spaces
- Laundry facilities
- Reception area staffed 24 hours a day
- Bike storage
- Welfare support 24 hours a day
- All utility bills included



# Next Steps



Follow our latest news

-  @oncampusglobal
-  @oncampus\_global
-  @oncampus\_uusa
-  @oncampus.global
-  @studentsofoncampus

#### HEAD OFFICE

Cambridge Education Group  
51-53 Hills Road, Cambridge,  
CB2 1NT, United Kingdom  
Telephone: +44 (0)1223 345698  
Email: [admissions@oncampus.global](mailto:admissions@oncampus.global)  
Web: [www.oncampus.global](http://www.oncampus.global)

#### CENTRE ADDRESS

ONCAMPUS Sunderland  
3rd Floor, Reg Vardy Building,  
Sir Tom Cowie Campus, St Peters Way,  
Sunderland SR6 0DD



[www.carbonbalancedprinter.com](http://www.carbonbalancedprinter.com)  
Healeys Print Group - Reg. 2108

Information in this brochure is correct at time of issue in January 2024. ONCAMPUS and the University Partner reserve the right to alter, reschedule or close courses which do not remain viable; students will be informed. Please check our website at [www.oncampus.global](http://www.oncampus.global) for updated information.

## 1 Submit your application by one of the following methods:

- Online: [www.oncampus.global](http://www.oncampus.global)
- Email: [admissions@oncampus.global](mailto:admissions@oncampus.global)

### Please remember to include all relevant documentation:

- Academic transcripts (with official translations, if original is not in English)
- Evidence of English Language level
- Copy of passport
- Explanation of any study gaps
- Copies of any previous/current UK visas

Additional documentation may be required depending on the course. Our Admissions team will contact you should this be the case.

## 2 Our Central Admissions team will review your application.

We will send you an offer letter that will list any outstanding conditions. We will remove any conditions that have already been met. If we think the course is not right for you, we will suggest an alternative. If we have any queries about your application, we will contact you for further information.

## 3 To accept your place on the course, you will need to meet all the remaining conditions, including payment of the deposit/registration fee or proof of government sponsorship. We can only confirm your place once all conditions have been met, although once the deposit is paid, we will hold a place for you.

Please note that if you require a visa to study with us, you may need to provide additional evidence to comply with the visa regulations in the UK. These are the requirements of the government and not of ONCAMPUS. Your assistance in meeting these requirements is much appreciated.

## 4 Once you have paid your deposit and met all the conditions of offer, we will confirm your place and send you a Confirmation of Acceptance for Studies (CAS) or a Certificate of Enrolment (CoE) depending on the type of visa you require. If you need to obtain a visa, you will need to use your CAS/CoE to support your visa application. Please note a CAS can only be issued up to six months before the start of the course (if you apply from outside the UK) or up to three months (if you are eligible to apply from within the UK).

## 5 You will then need to apply for a visa, if you require one, to study in the UK. It is your responsibility to obtain a visa before you travel to join the course.

If you do not have a valid visa for studies in the UK, you will not be able to join the course. You are required to pay at least the first term's tuition fees before you begin your studies at ONCAMPUS. You should arrive on the weekend before the start date of the course; please check your CAS or CoE for further details.

## 6 We will send you pre-arrival information.

The accommodation application form will be included in the pre-arrival information. You should complete the form, selecting your preferred option, and return it to ONCAMPUS Sunderland by email to [liveinsunderland@oncampus.global](mailto:liveinsunderland@oncampus.global). Newcastle is the closest international airport to ONCAMPUS Sunderland. You can transfer to your accommodation by Tube, train, coach or taxi. Please be advised that public transport is the cheapest option, please refer to pre-arrival information that we send you for more details.