

YOUR POCKET MAP OF ONCAMPUS LONDON

The London Underground is a metro system serving a large part of Greater London, providing fast and efficient service for those travelling around the city.



DISTANCES:	
Kings Cross:	0.9 miles 19 mins walk
St Pancras:	0.9 miles 19 mins walk
Oxford Street:	1.0 miles 21 mins walk
London Eye:	1.8 miles 18 mins by underground

MAP KEY:	
	Railway Station
	Underground Station
	Student Accommodation
	Railway Line
	Place of Worship Church
	Place of Worship Mosque
	Place of Worship Hindu Temple
	Restaurant



01. ONCAMPUS LONDON AT BIRKBECK UNIVERSITY OF LONDON



02. BRITISH MUSEUM
Dedicated to human history and culture. Its permanent collection, numbering some eight million works, is among the largest and most comprehensive in existence.
0.5 miles | 9 mins | 3 mins



03. THE NATIONAL GALLERY
Founded in 1824, it houses a collection of over 2,300 paintings dating from the mid-13th century to 1900. Entry to the main collection is free of charge.
1.1 miles | 22 mins | 9 mins



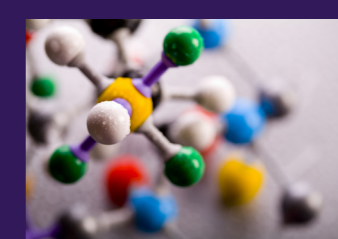
04. THE BRITISH LIBRARY
The library is a major research library, holding over 150 million items from many countries, in many languages and in many formats, both print and digital.
0.8 miles | 13 mins | 6 mins



05. VICTORIA AND ALBERT MUSEUM
The world's largest museum of decorative arts and design, housing a permanent collection of over 4.5 million objects. It was founded in 1852 and named after Queen Victoria and Prince Albert.
3.6 miles | 21 mins | 33 mins



06. THE NATURAL HISTORY MUSEUM
The museum is home to life and earth science specimens comprising some 70 million items within five main collections: Botany, Entomology, Mineralogy, Palaeontology and Zoology.
3.8 miles | 23 mins | 35 mins



07. SCIENCE MUSEUM
The museum is a major London tourist attraction, attracting 2.7 million visitors annually. Like other publicly funded national museums in the United Kingdom, the Science Museum does not charge for admission.
3.8 miles | 22 mins | 38 mins



08. TATE MODERN
Britain's national museum of international modern art. Each year, more than 5 million visitors visit the vast gallery to view some of the most famous (and bizarre) artworks in the world.
2.4 miles | 14 mins | 33 mins

All distances are given from ONCAMPUS