



UNIVERSITY
OF HULL



www.oncampus.global/hull

**ONCAMPUS
HULL**

01047



ONCAMPUS HULL

2024-25

2024-25



UNIVERSITY
OF HULL

**ONCAMPUS
HULL**

ONCAMPUS HULL



UNIVERSITY OF HULL

ONCAMPUS is proud to work in partnership with the University of Hull to offer high-quality university preparation programmes for international students on the University campus.

The University of Hull is one of the oldest universities in England. It has a long and distinguished tradition of providing first-class education and rewarding life experiences to students from all over the world.

Hull is a campus university, which blends the traditional with the innovative. This means you can experience life on a green and leafy 125-acre campus, complete with beautiful old buildings, while taking advantage of a cutting-edge academic environment that embraces technology, social connectivity and a global outlook. This blend gives the University of Hull a unique atmosphere.

This bustling city is a stone's throw away from some of Britain's loveliest countryside as well as expansive coastlines, offering the best of all worlds.



Hull is one of the least expensive cities

in the UK making your money
go further



2.5 hours
to **London** by train

as well as great train links to
other UK cities such as Leeds,
York, Manchester, Sheffield,
Liverpool and many more...



Contents

+ About the University of Hull	
University highlights	04
Faculty highlights	06
Progression degrees	08
+ About ONCAMPUS	
How ONCAMPUS works	10
Your route to a degree	11
Our programmes:	
Undergraduate Foundation Programme (UFP)	12
International Year One (IY1)	14
Pre-Master's Programme (PMP)	16
+ About Student Life	
Guide to Hull	18
+ Accommodation	
Accommodation options	22
+ Applying	
Next steps	24



University Highlights



"TEF Gold is a remarkable achievement. It reflects the University of Hull's innovative, distinctive approach and exceptional learning resources on campus." Professor Dave Petley, Vice-Chancellor of the University of Hull.



£300 million investment 

in high quality teaching and learning facilities, IT infrastructure, research laboratories, social spaces and sporting facilities

Official Team GB Partner 

offering students opportunities for joint research and enterprise projects, in support of Team GB up until 2024

Top 20

in the UK for overall positivity measure – ahead of all the Russell Group universities THE 2023

World Changing Discoveries

Bone Density Scanner and LCD technology were discovered at Hull University

100 discoveries by British Universities UK 

81%

of students graduate with a First or Upper Second class degree



A global community of staff, students and alumni from over

100 countries

around the world

44th

in the UK and 401-450 in the world, the highest ranking yet for the university

THE World University Rankings 2024

The University of Hull

Student Futures Team can help you research and plan your career, and put you directly in touch with recruiting employers

Founded in 1927

the University of Hull is the 14th oldest university in England



Faculty Highlights

Studying Engineering



The Faculty of Science and Engineering unites leading academics and state-of-the-art facilities, with teaching and research across a broad range of science and engineering areas. The University of Hull's interdisciplinary research centres are confronting some of the biggest challenges facing the world today.

General Engineering is ranked

17th

for learning opportunities

National Student Survey 2021

59,000

the annual shortfall of engineers and technicians

HESA student record 2018/19' data, 2020



Mechanical Engineering

students can take part in **Formula Student** — Europe's most established educational motorsport contest

4th

for Chemical Engineering

Guardian University Guide 2024

Chemical engineering is the second highest-paid profession for new graduates, after dentistry

Studying Business



As a business student, you will benefit from professional accreditation or membership of professional bodies and/or exemptions from professional examinations.

The Business School is proud to hold multiple industry accreditations as well as independent international accreditations such as AACSB, held by less than 5% of the world's 13,000 business programmes.



Studying Politics

Politics — **87%** overall satisfaction
National Student Survey (NSS) 2021, HEIs only

25th

Guardian University Guide 2024

Recent Politics graduates have taken roles as; Senior Assistant in the Prime Minister's Political Office

Director of Communications for the **Financial Times**

Member of Parliament and Head of Political Communications for the **Labour Party**

Hull offers one of the UK's largest integrated Westminster placement schemes

— providing students with access to the corridors of power

Studying Science



Computer Science programmes

provide you with the skills, experience and technical expertise to put you in high demand when it is time to enter the job market.

Computer Science graduates work for the likes of Sony, Microsoft, Electronic Arts, Rockstar Games, Dell and Fujitsu.

Computer courses at Hull are linked with industry giants such as Microsoft, Sony and EA.

Specialist areas include computer gamification, dependable intelligent systems, robotics and AI, and simulation and visualisation — **innovative degrees for post-pandemic careers.**

Take advantage of facilities such as the new robotics and 3D printing laboratories

10th for Physics

Guardian University Guide 2023

16th

for Chemistry

Guardian University Guide 2024

Studying Law



Law has been taught at Hull since 1927

and is highly regarded, both within academia and the legal profession

Experience law in practice, advising real clients with real problems. Over 1,000 people have been helped by students from the regional community



Learn the ropes in the mock law court, enter moot competitions to hone your skills and engage in client interview practice



Undergraduate degrees you can progress to

Students who meet the specified entry criteria are guaranteed progression at the University of Hull. The Undergraduate Foundation Programme is available with an Integrated CAS option.

Progression to Year 2 of these degrees is available through the International Year One programme with an Integrated CAS.

Business, Economics, Finance, Management, Law and Politics pathway

English Required IELTS equivalent: 6.0 - no component less than 5.5

Pass Mark for progression: 40% in academic modules

BA (Hons) Business Economics	BA (Hons) Marketing and Management
BA (Hons) Business Management	BA (Hons) Media Production
BA (Hons) Business Management with Accounting	BA (Hons) Media Studies
BA (Hons) Business Management with Entrepreneurship	BA (Hons) Philosophy, Politics and Economics
BA (Hons) Business Management with Financial Management	BA (Hons) Politics
BA (Hons) Business Management with Human Resource Management	BA (Hons) Politics and International Relations
BA (Hons) Business Management with Logistics and Supply Chain	BA (Hons) War and Politics
BA (Hons) Business Management with Marketing	BSc (Hons) Accounting
BA (Hons) Creative Writing and Film Studies	BSc (Hons) Accounting and Financial Management
BA (Hons) Criminology ²	BSc (Hons) Financial Management
BA (Hons) Drama	LLB (Hons) Law ¹
BA (Hons) Graphic Design	LLB (Hons) Law and Legislative Studies ¹
BA (Hons) International Business	LLB (Hons) Law with Business Management ¹
BA (Hons) Marketing	LLB (Hons) Law with Criminology ¹
	LLB (Hons) Law with Politics ¹

¹ Exceptional guaranteed progression requirements: 6.5 IELTS equivalent with no component lower than 5.5.

² For the different streams available please visit www.oncampus.global/coursefinder

Engineering and Physical Sciences pathway

English Required IELTS equivalent: 6.0 - no component less than 5.5

Pass Mark for progression: 40% in academic modules

BEng Biomedical Engineering	4-year Integrated Master's degrees
BEng Chemical Engineering	MEng Biomedical Engineering
BEng Electrical and Electronic Engineering	MEng Chemical Engineering
BEng Mechanical and Medical Engineering	MEng Computer Science
BEng Mechanical Engineering	MEng Computer Science for Games Programming
BEng Robotics and Artificial Intelligence	MEng Computer Science (Software Engineering)
BSc Biochemistry	MEng Electrical and Electronic Engineering
BSc Computer Science	MEng Mechanical and Medical Engineering
BSc Computer Science for Games Programming	MEng Mechanical Engineering
BSc Computer Science (Software Engineering)	MEng Robotics and Artificial Intelligence
BSc Mathematics	MPhys Physics
BSc Physics	MPhys Physics with Astrophysics
BSc Physics with Astrophysics	MPhys Theoretical Physics
BSc Theoretical Physics	

Master's degrees you can progress to

Students who meet the specified entry criteria are guaranteed progression at the University of Hull.

Pre-Master's Programme

English Required IELTS equivalent: 6.0 - no component less than 5.5

Pass Mark for progression: 40% in academic modules

MSc Accounting and Finance	MSc Logistics and Supply Chain Management
MSc Business Management	MSc Marketing Management
MSc Digital Marketing and Advertising	
MSc Financial Management	

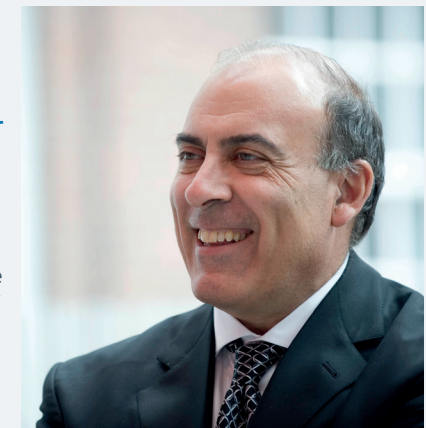
Please note progression degrees are subject to change.



“ There is no question that my economics degree from Hull has served me exceptionally well over the course of my career...”

...The critical thinking required, the ability to step back and think holistically about solving problems and the rigorous discipline involved in such a classic liberal arts education have been the foundation for my career and success. Hull is very much part of who I am today.”

Muhtar Kent, Former Chairman, The Coca-Cola Company



How ONCAMPUS Works

Our programmes at **ONCAMPUS** Hull are designed for international students who do not meet the requirements for direct entry to study at the University of Hull. You will benefit from the support we offer in preparing you to progress to the University.



Increase your English language level

- Academic writing skills
- Academic reading skills
- Presentation and discussion skills
- Listening and note taking

Improve academic grades and study skills

- Additional year of study equivalent to 13 years of UK study for undergraduate degree
- Demonstrate academic level to meet university requirements
- Present higher grades in pathway programme than achieved at high school for undergraduate entry
- Learn the study skills essential for success in UK universities
- Additional research study skills for Master's students

Expert university progression support

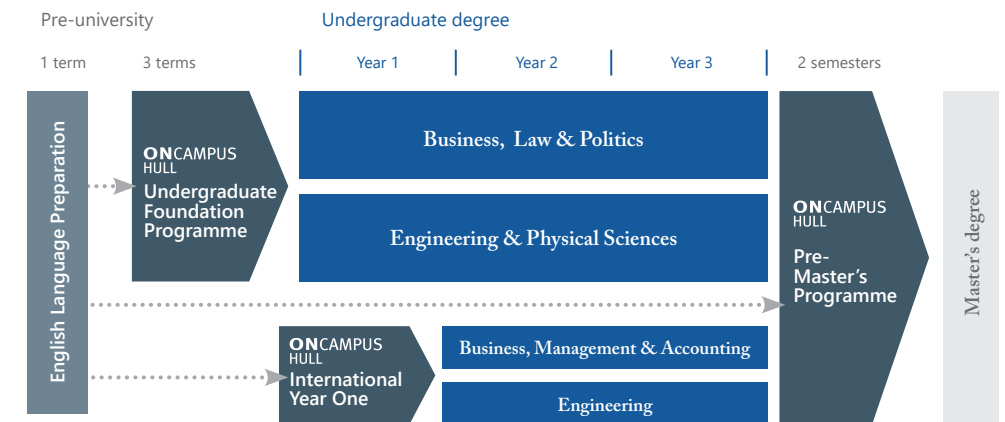
- Expert guidance on which degree to progress to
- One-to-one support sessions
- Faculty visits and meetings

Progress to university degree

Your route to a degree at the University of Hull

ONCAMPUS Hull offers guaranteed progression* to a wide range of undergraduate and postgraduate degrees at the University of Hull, on successful completion of our Foundation, International Year One or Pre-Master's Programmes.

*subject to meeting the specified entry criteria



ONCAMPUS gives you...

Outstanding teaching and support

Through every step of your journey with us, you will be supported by highly qualified teachers and support staff, both inside and outside the classroom.

Your personal tutor will meet with you regularly to ensure you are on track to pass the programme and progress to your chosen degree.

Your personal tutor is also there to help you with any issues you might have inside or outside the classroom.

A proven track record of success

ONCAMPUS is part of Cambridge Education Group, one of the UK's leading university pathway providers since 1952.

Cambridge Education Group was the first private institution to offer university foundation programmes in the UK in 1985, and successfully prepares thousands of students for the UK's top universities every year.

Part of the University from day one

The **ONCAMPUS** centre is located at the heart of the University.

You will receive a University student card, and with it you will have access to all the University's facilities, clubs and societies while you study your **ONCAMPUS** programme.

You will meet your course leader at the University before you start your degree, and have the opportunity to try out some of the excellent facilities.

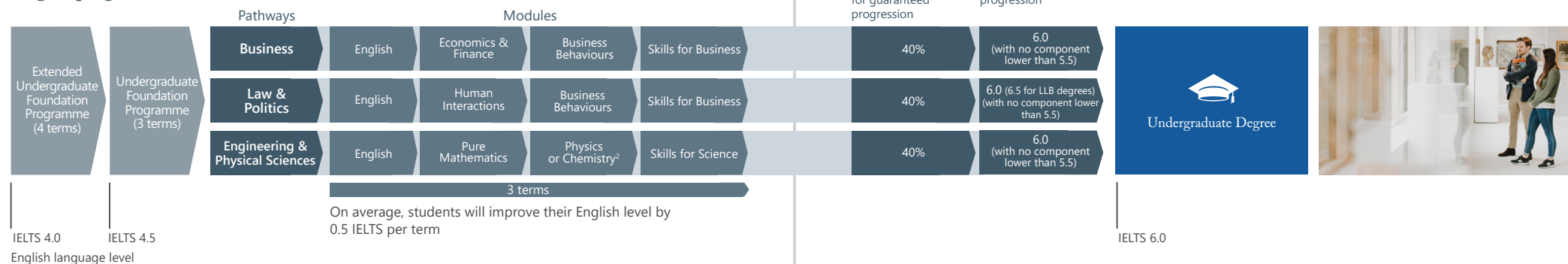


Undergraduate Foundation Programme (UFP)

This programme gives guaranteed progression¹ to Year 1 of a wide range of undergraduate degrees.

Available with Integrated CAS.

Degree progression route



IELTS 4.0
English language level

IELTS 4.5

On average, students will improve their English level by 0.5 IELTS per term

IELTS 6.0

Entry criteria

English level: From **4.5 IELTS** or equivalent, with no component less than 4.0, for 3-term UFP.

An extended programme is available if you do not have the required English language level. This programme lasts 4 terms and includes English followed by 3 terms of UFP.

Guideline minimum age: **17+**
Under-18 students are subject to the under-18 supplement.

¹ Subject to achieving the pass mark for progression, detailed above.
² The module you study will depend on your chosen progression degree.

Academic requirements: **11-12 years**
Successful completion of 11-12 years of schooling with good grades. Please see www.oncampus.global for country-specific academic entry requirements.

For progression degrees, see page 08



"I didn't want a 'hustle bustle' city or a boring city. Hull sits in between and meets my needs in terms of my personality. The UFP Business course is a mixture of academic and practical which I like. Whenever I run into issues with assignments and tests I can get help from my teachers quickly and effectively. My teachers are passionate at giving tips and advice as to how to overcome any difficulties."

Tom | Vietnamese | **Applying for:** BA (Hons) Business Management and Supply Chain Management | **University of Hull**

Dates	Number of terms	Business, Law and Politics tuition fee	Engineering and Physical Sciences tuition fee	Progressing to undergraduate degree starting in
23 September 2024 - 08th June 2025	3	£16,470	£17,970	September 2025
23 September 2024 - 08th August 2025	4	£21,960	£23,460	September 2025
04th November 2024 - 08th August 2025	3.5	£19,215	£20,715	September 2025
06th January 2025 - 08th August 2025	3	£16,470	£17,970	September 2025

All programmes are subject to a £450 registration fee.

An under-18 supplement applies to all students under the age of 18 at the start of their programme. For more details visit www.oncampus.global/about-us

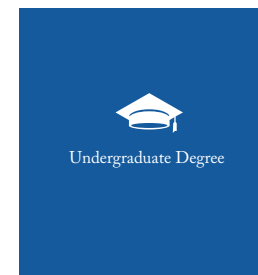
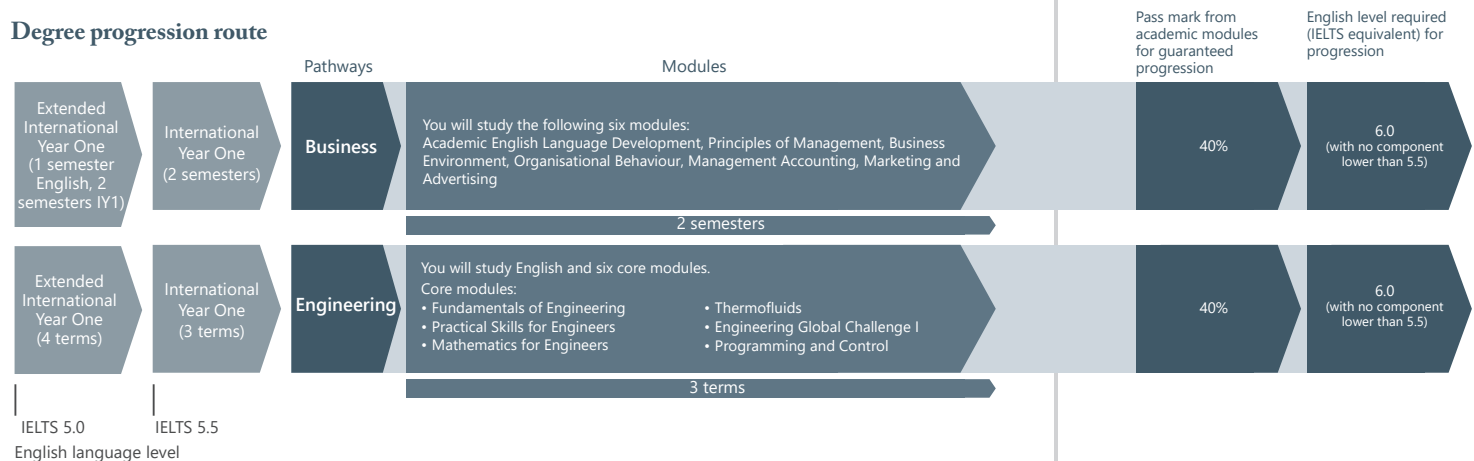
The 3.5 term programmes consist of English language during the first 0.5 term although some academic content may be included. **Note:** Modules are subject to availability and you will be guided onto the best combination of academic modules for your intended degree when you arrive at **ONCAMPUS Hull**. For more information on module content visit our website www.oncampus.global.

International Year One (IY1)

This programme offers guaranteed progression¹ to Year 2 of selected business and engineering degrees.

Integrated CAS only.

Degree progression route



IELTS 6.0

Entry criteria

English level:

From 5.5 IELTS
 or equivalent, with no component less than 5.5, for 3-term/2 semester IY1.
 An Extended programme is available depending on your English language and/or academic level.

Academic requirements:

12 years
 Successful completion of high school with good grades.
 Please see www.oncampus.global for country-specific academic entry requirements.

Guideline minimum age:

17+
 Under-18 students are subject to the under-18 supplement.

¹ Subject to meeting specified entry criteria.

For progression degrees, see page 08



"I enjoyed a lot in my programme from the teachers who have a beautiful spirit and work with you as if they were your friends, to the workers in the student office who are very cheerful and love to help. I developed many things in my preparation for university, the most important of which is my English, but also skills in research, questionnaires and searching for sources."

Wael | Saudi | Progressed to: BA (Hons) Business Management | University of Hull

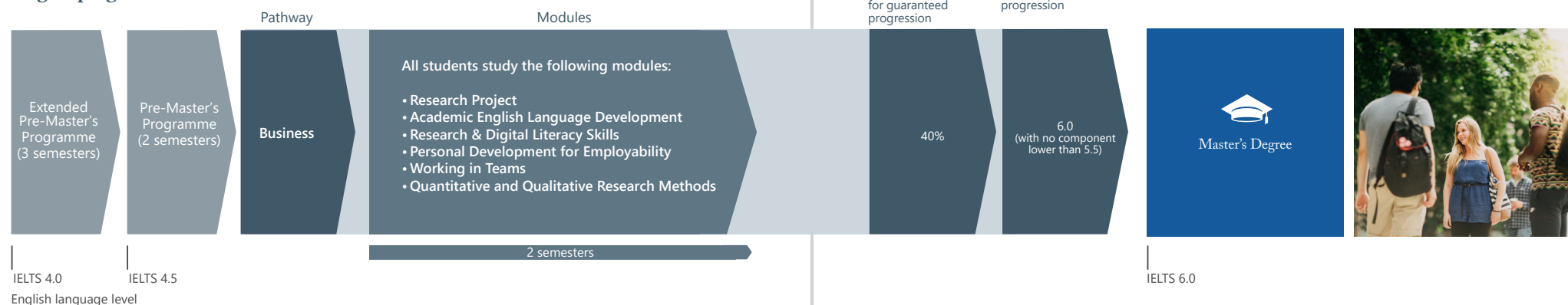
Dates	Number of terms/semesters	Business, Management and Accounting tuition fee	Engineering tuition fee	Progressing to undergraduate degree Year 2 starting in
23rd September 2024 - 08th June 2025	3 terms/2 semesters	£16,980	£18,480	September 2025
23rd September 2024 - 08th August 2025	4 terms/3 semesters	£22,470	£23,970	September 2025
04th November 2024 - 08th August 2025	3.5 terms/2.5 semesters	£19,725	£21,225	September 2025
06th January 2025 - 08th August 2025	3 terms	n/a	£18,480	September 2025
13th January 2025 - 08th August 2025	2 semesters	£16,980	n/a	September 2025

All programmes are subject to a £450 registration fee.
 An under-18 supplement applies to all students under the age of 18 at the start of their programme. For more details visit www.oncampus.global/about-us
 The 3.5 term/2.5 semester programmes consist of English language during the first 0.5 term although some academic content may be included.

Pre-Master's Programme (PMP)

The Pre-Master's Programme offers guaranteed progression, subject to achieving progression criteria, to a wide range of business-related Master's degrees at the University of Hull.

Degree progression route



Entry criteria

English level: From **4.5 IELTS** or equivalent, with no single element less than 4.0, for 2-semester PMP.

An extended programme is available if you do not have the required English language level. This programme lasts 3 semesters and includes an English language module (ELPP) followed by 2 semesters of PMP.

Academic requirements: **Degree** Successful completion of Bachelor's degree or equivalent from a recognised university.

Guideline minimum age: **21+**

For guaranteed progression*:

- 40% in academic subjects
- 6.0 IELTS or equivalent (with no component lower than 5.5)
- Some degrees require additional interview, audition/portfolio and/or a higher pass mark, as indicated on the degree list on page 09.



"ONCAMPUS teaching methods were personalised. We were sometimes asked to discuss certain topics in the class, while in our free time, given many opportunities to get feedback on assignments. To make the most of these chances, we had to be independent learners. I have developed many skills, one of those being reflection. I think this is the most essential skill not only as a student but as a person. Overall I am most proud of being awarded best MFP student."

Masa | Japanese | Progressed to: MSc Logistics and Supply Chain Management | University of Hull

Dates	Number of semesters	Tuition fee	Progressing to Master's degree starting in
23rd September 2024 - 09th May 2025	2	£16,470	September 2025
23rd September 2024 - 08th August 2025	3	£21,960	September 2025
13th January 2025 - 08th August 2025	2	£16,470	September 2025

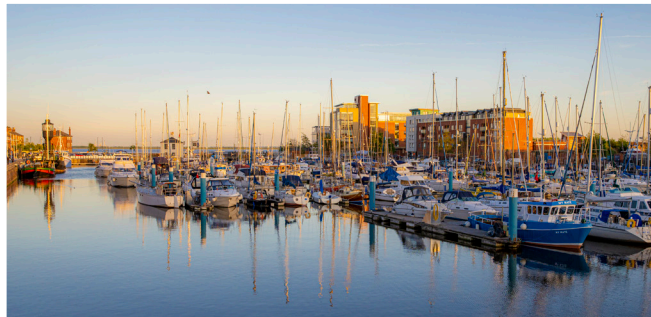
All programmes are subject to a £450 registration fee. Please note the structure of the programme and modules are subject to change.

Guide to Hull, Yorkshire



Hull is a bustling city in Yorkshire that sits on the northern shore of the Humber Estuary. The city is close to some of the UK's most scenic countryside as well as expansive coastlines. The entire city centre has been revamped in recent years, all of which helped it achieve the prestigious 'City of Culture' award.

Hull is also one of the least expensive cities in the UK, meaning your money will go much further when compared to other similar cities in the UK.



Hull Marina

is a peaceful oasis amidst the bustle of the Humber Estuary. With a history that spans over 200 years, the Marina moors up to 260 boats at any one time.

Wide variety of cultural attractions

including a Museum Quarter, Ferens Art Gallery, a Grade II listed park and the deepest Aquarium in Europe.



Just under 1 hour to

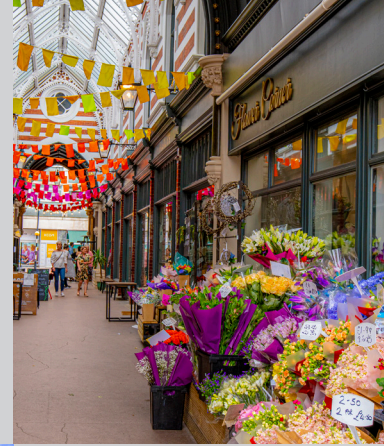
York

by train. Famous for its beautiful cathedral, cobbled medieval streets like The Shambles and historic city walls.



Over **50**  restaurants within city centre

including Indian, Thai, Italian and many more...



4 shopping centres within 4 miles of city centre


plus regular local markets, a wide range of independent shops and further large shopping centres at Leeds and Sheffield.

Walk or cycle across one of the largest single span suspension bridges in the world which spans 2,200 feet or 1.4 miles.



Direct flights to **Europe** 

from nearby Humberside Airport, and a global reach via Amsterdam's Schiphol Airport.

5  cinemas within 5 miles of Hull city centre

including Odeon, Cineworld, Reel, and Vue.



Under **3** miles to **MKM Stadium** 

10 minutes by train or 12 minutes to cycle to the huge sporting venue.



3,500 fish in **The Deep aquarium**

Located in the city centre, The Deep is one of the UK's most spectacular award-winning aquariums.

DIGITAL MAP



University of Hull

ONCAMPUS Hull CITY GUIDE PAGE



oncampus.global/hull-city-guide

University Sports
& Fitness Centre

ONCAMPUS



Robert Blackburn
Faculty Of Science
& Engineering

Engineering Innovation



Derwent
Nidd



Brynmor Jones
University Library

Students' Union



◀ Humber Bridge
15 Miles



▼ Hull Marina:
4.5 Miles

Business School

Wharfe

Esk

Chanterlands
Avenue

Dennison Centre
University International Office



▼ Ferens Art Gallery
3.5 Miles



▼ Museum Quarter
3.6 Miles



▼ Streetlife Museum
3.6 Miles



▼ The Deep Aquarium
4.1 Miles

Accommodation in Hull

ONCAMPUS aims to make sure that finding a place to live while you study with us is quick and easy. It is very important that you have a place to stay when you arrive in the UK, and while you can choose to organise your own accommodation, we strongly recommend that all students book a room through our free service.

We have two fantastic residences available for you to book in Hull, both offering good value for money. The details below indicate the types of facilities available and the price range you can expect from our accommodation options.



Distance to
ONCAMPUS



Wi-Fi
Access



Laundry
Room



Games Room



Bike
Storage



Communal
Spaces



24hour
Repair Line

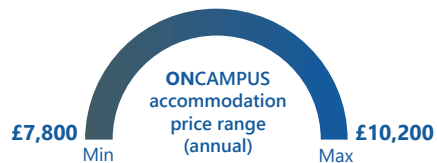


En-Suite
Rooms

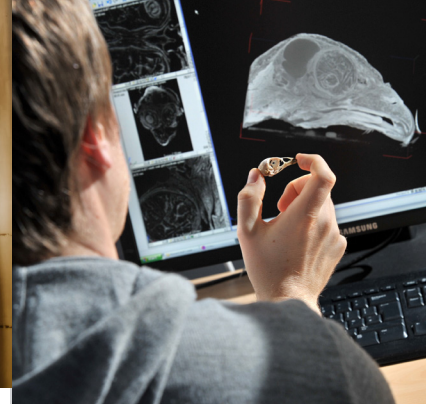


+ Facilities Include:

- Less than 1 minute walk to ONCAMPUS
- Student lounge
- Games room
- Communal study spaces
- Laundry facilities
- Reception area staffed 24 hours a day
- Bike storage
- Welfare support 24 hours a day
- All utility bills included



Next Steps



1 Submit your application by one of the following methods:

- Online: www.oncampus.global
- Email: admissions@oncampus.global



Please remember to include all relevant documentation:

- Academic transcripts (with official translations, if original is not in English)
- Evidence of English Language level
- Copy of passport
- Explanation of any study gaps
- Copies of any previous/current UK visas

Additional documentation may be required depending on the course. Our Admissions team will contact you should this be the case.

2 Our Central Admissions team will review your application.



We will send you an offer letter that will list any outstanding conditions. We will remove any conditions that have already been met.

If we think the course is not right for you, we will suggest an alternative.

If we have any queries about your application, we will contact you for further information.

3 To accept your place on the course, you will need to meet all the remaining conditions, including payment of the deposit/registration fee or proof of government sponsorship. We can only confirm your place once all conditions have been met, although once the deposit is paid, we will hold a place for you.



Please note that if you require a visa to study with us, you may need to provide additional evidence to comply with the visa regulations in the UK. These are the requirements of the government and not of ONCAMPUS. Your assistance in meeting these requirements is much appreciated.

4 Once you have paid your deposit and met all the conditions of offer, we will confirm your place and send you a Confirmation of Acceptance for Studies (CAS) or a Certificate of Enrolment (CoE) depending on the type of visa you require. If you need to obtain a visa, you will need to use your CAS/CoE to support your visa application. Please note a CAS can only be issued up to six months before the start of the course (if you apply from outside the UK) or up to three months (if you are eligible to apply from within the UK).



5 You will then need to apply for a visa, if you require one, to study in the UK. It is your responsibility to obtain a visa before you travel to join the course.



If you do not have a valid visa for studies in the UK, you will not be able to join the course. You are required to pay at least the first term's tuition fees before you begin your studies at ONCAMPUS. You should arrive on the weekend before the start date of the course; please check your CAS or CoE for further details.

6 We will send you pre-arrival information.



The accommodation application form will be included in the pre-arrival information. You should complete the form, selecting your preferred option, and return it to ONCAMPUS Hull by email to liveinhull@oncampus.global. Humberside, Manchester and Leeds/Bradford are the closest airports to ONCAMPUS Hull. There are various routes that you can take from these airports by train, bus or taxi. Please be advised that public transport is the cheapest option. Please refer to pre-arrival information that we send you for more details.



Follow our latest news

- @oncampusglobal
- @oncampus_global
- @oncampus_uusa
- @oncampus.global
- @studentsofoncampus

HEAD OFFICE

Cambridge Education Group

51-53 Hills Road, Cambridge,
CB2 1NT, United Kingdom

Telephone: +44 (0)1223 345698

Email: admissions@oncampus.global

Web: www.oncampus.global

CENTRE ADDRESS

ONCAMPUS Hull

Leven Building,
University of Hull
HU6 7RX



www.carbonbalancedprinter.com
Healeys Print Group - Reg. 2108

Information in this brochure is correct at time of issue in January 2024. ONCAMPUS and the University Partner reserve the right to alter, reschedule or close courses which do not remain viable; students will be informed. Please check our website at www.oncampus.global for updated information.