

A photograph of a modern dining area. In the foreground, there are several long, light-colored wooden tables with dark wooden chairs. In the middle ground, there are orange armchairs and small wooden tables. The background features large windows with black frames, pendant lights, and a bulletin board on the wall. The overall atmosphere is bright and contemporary.

# Accommodation — IN — LONDON

2023

# Welcome

ONCAMPUS aim to make sure that finding a place to live while you study with us is quick and easy. It is very important that you have a place to stay when you arrive in the UK, and while you can choose to organise your own accommodation, we strongly recommend that all students book a room through our free service.

Booking with us ensures that you will have a safe, comfortable environment, and that you will be housed with other ONCAMPUS students, which is a great opportunity to make friends!

We have some fantastic residences available for you to book that are great value for money. We strongly recommend booking early as accommodation in London sells out fast. The following pages contain lots of information on your choices and at the back of this pack you will find a quick summary table displaying the key features of each residence. There is also a price list and details on how to reserve a room once you have chosen your new home.

If you have any questions that are not covered in this guide, or you just want some advice, please contact us at [liveinlondon@oncampus.global](mailto:liveinlondon@oncampus.global) and we will be happy to help.

**We look forward to welcoming you to ONCAMPUS London.**

The Accommodation Team



Games Room, Mannequin House



Outdoor terrace, Don Gratton House



Study Room, Mannequin House





## Drapery Place

### STUDIO

Drapery Place is located right in the heart of London and offers fantastic studio rooms with private kitchen and bathroom facilities. The property has a great selection of communal facilities for you to use such as a gym, dance studio, study spaces and common area. With multiple transport options available, you can commute to **ONCAMPUS** in just 23 minutes.

Leaving your flat behind you for the day couldn't be more exciting, with the vibrant streets of Shoreditch and Spitalfields under a mile away. Check out Brick Lane and Old Spitalfields markets for a diverse range of treasures and some delicious food.

Please note that we are only taking bookings for Term 1, with tenancy dates running from 16th September until 27th December.



**23 minutes**  
TRAVEL TIME TO  
ONCAMPUS



**Wi-Fi**  
Access



**Outdoor**  
Social Space



**Study**  
Room



**Private**  
Bathroom



**Gym**



**Pool/Football**  
Table



**Dance**  
Studio

### + Facilities Include:

- Multiple study spaces
- Common area with TVs, pool and football table
- On-site gym
- On-site dance studio
- Outdoor social space
- Utility bills included
- Staffed 24/7
- CCTV
- Wi-Fi
- Laundry facilities



Drapery Place is owned and managed by UNITE Students



## Don Gratton

EN-SUITE

Don Gratton House features cosy, en-suite rooms in Whitechapel, a vibrant area in zone 2. You are in a prime location for an unforgettable London experience: enjoy the many restaurants, bars, local markets, and events that the city has to offer, whilst having easy access to all the essential shops and supermarkets.

In this residence, you can find a games room where you and your peers can have some friendly competition, a common room for laid back conversation and group studying, an outdoor terrace, and on-site laundry facilities. All rooms come with a spacious study desk and chair, plenty of storage, and a pin board to keep your reminders in site and to add your personal touch.

There is 24/7 surveillance and an onsite team available to assist you. If needed, there is on-site maintenance for any emergency repairs.



**25 minutes**  
TRAVEL TIME TO  
ONCAMPUS



**Common  
kitchen  
cleaned weekly**



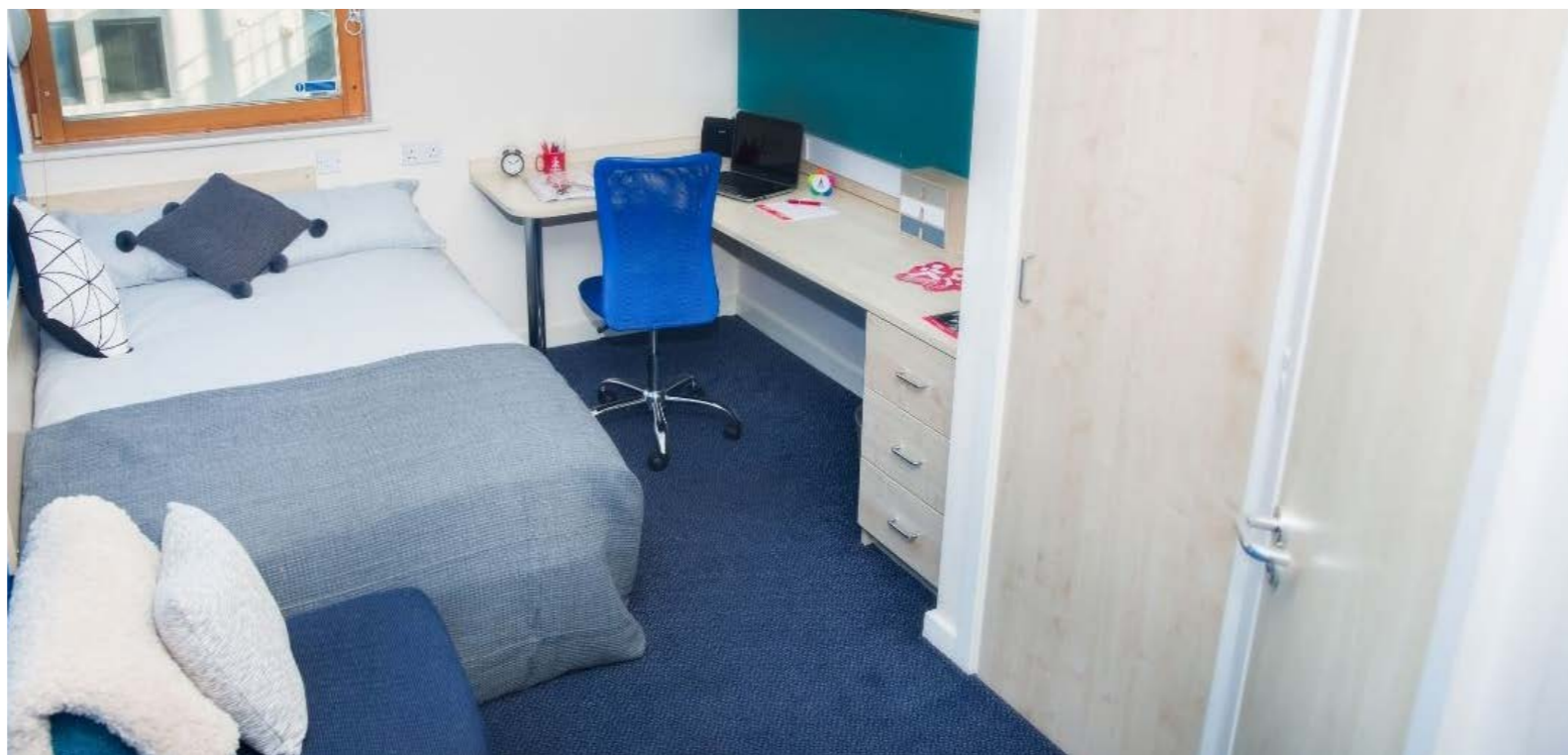
**Laundry  
Room**



**Social  
Spaces**

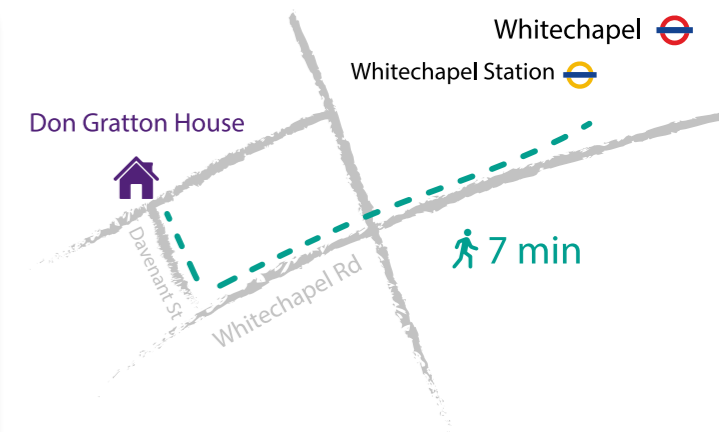


**24/7 on-site  
team and  
CCTV**



### + Facilities Include:

- Outdoor terrace
- Bike storage
- Games room
- Common room
- Weekly kitchen clean included
- On-site laundry
- On-site security & CCTV
- Free broadband and high-speed WiFi
- On-site maintenance
- Utility bills included



Don Gratton House is owned and managed by Sanctuary Student.



## Raleigh House

EN-SUITE/ NON-EN-SUITE

Two converted town houses form Raleigh House and offer a fantastic and unique student living experience in central London. The residence offers a range of ensuite and standard rooms (2 standard rooms share 1 bathroom). The property has a very large kitchen with a lounge area to relax and socialise in. A recent addition to the building is a laundry room with free to use machines.

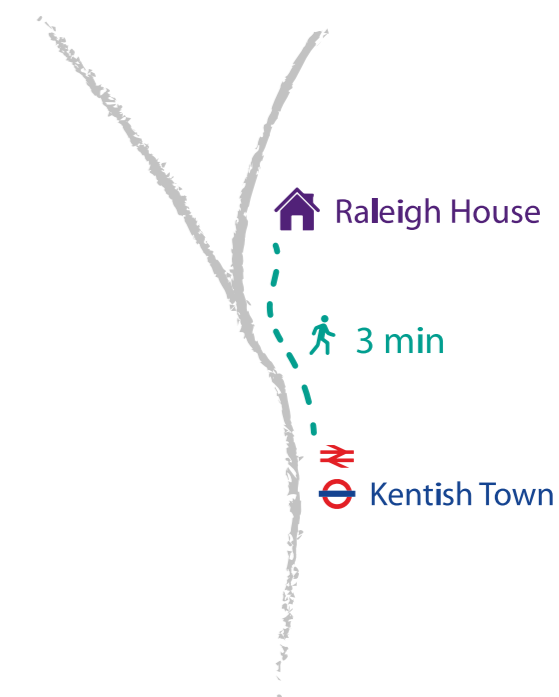
Raleigh House is a parent's perfect choice and is specifically tailored to younger students as they have the benefit of a live-in community staff member, who is experienced at supporting international students new to London.

The property is a 3-minute walk from Kentish Town Underground station, meaning you can travel from the house to **ONCAMPUS** in just 16 minutes. Alternatively, there are great bus links if that is your preferred travel choice.



### + Facilities Include:

- Community Manager living on site
- Large communal kitchen
- Free laundry facilities
- 20 bedrooms in the property
- Utility bills included



Raleigh House is managed by London Nest and owned by Student Space Ltd

## Accommodation overview

Residence	MANNEQUIN HOUSE	DRAPERY PLACE	DON GRATTON	RALEIGH HOUSE			
Room type	En-suite	Studio	En-suite	Double En-suite	Single En-suite	Double Standard	Single Standard
Bathroom	Private	Private	Private	Private	Private	Shared (between 2)	
Kitchen	Shared	Private	Shared	Shared			
Catering	Self-catered	Self-catered	Self-catered	Self-catered			
Bedding Pack	Included	Included	Included	Included			
Internet access	Up to 100mb/s	Up to 100mb/s	Up to 100mb/s	Up to 100mb/s			
Travel time to ONCAMPUS	25 minutes	23 minutes	25 minutes	16 minutes			
Age suitability	17+	17+	18+	17-18			
Refundable deposit payment	£250	£250	£250	£250			
Price per term	£4,350	£6,600*	£4,200	£4,000	£3,850	£3,450	£3,200

\*Only accepting bookings for T1 (tenancy period: 16th September – 27th December).

## How to apply



Complete and return the Accommodation Preference Form to [liveinlondon@oncampus.global](mailto:liveinlondon@oncampus.global)



We will confirm availability and send you a room offer



Read and accept your room offer and return it back to us with your initial payment



We will reserve your room and send you a booking confirmation



Book your flight and let us know your arrival date. If you need an airport pick up we are happy to provide you with a quote



Arrive in the UK and collect your room keys!



**Don't miss out!**  
We recommend booking your room as soon as possible to ensure your preferred choice is available.



**Airport pick-up**  
Please contact [liveinlondon@oncampus.global](mailto:liveinlondon@oncampus.global) and we will be happy to assist in booking an airport arrival transfer.

# ONCAMPUS LONDON ACCOMMODATION PREFERENCE FORM

Please complete the application form and return it to us at [liveinlondon@oncampus.global](mailto:liveinlondon@oncampus.global)

Personal details	
Full name:	Student ID:
Course start date:	Gender:
Course end date:	Age at start of course:
Nationality:	Date of Birth:

Congratulations on receiving an offer at  
**ONCAMPUS  
LONDON**

We will make every effort to provide you with the accommodation of your choice. However due to the large volume of applications we process, preferences cannot always be guaranteed. Rooms will be allocated on a first come, first served basis according to availability.

Please make your room selection below.

Accommodation	Price Per Term	Apply
Mannequin House - En-suite (17+)	£4,350	
Drapery Place - Studio (17+)	£6,600	
Don Gratton - En-suite (18+)	£4,200	
Raleigh House - Double En-suite (17-18)	£4,000	
Raleigh House - Single En-suite (17-18)	£3,850	
Raleigh House - Double Standard (17-18)	£3,450	
Raleigh House - Single Standard (17-18)	£3,200	

Got a question about accommodation?

Contact the accommodation booking team at [liveinlondon@oncampus.global](mailto:liveinlondon@oncampus.global)